

CERTIFIED LAND CORNER RECORDATION

DESCRIPTION OF CORNER EVIDENCE FOUND, AND ORIGINAL RECORD (if known)

FOUND 1/2" REBAR IN FENCE CORNER

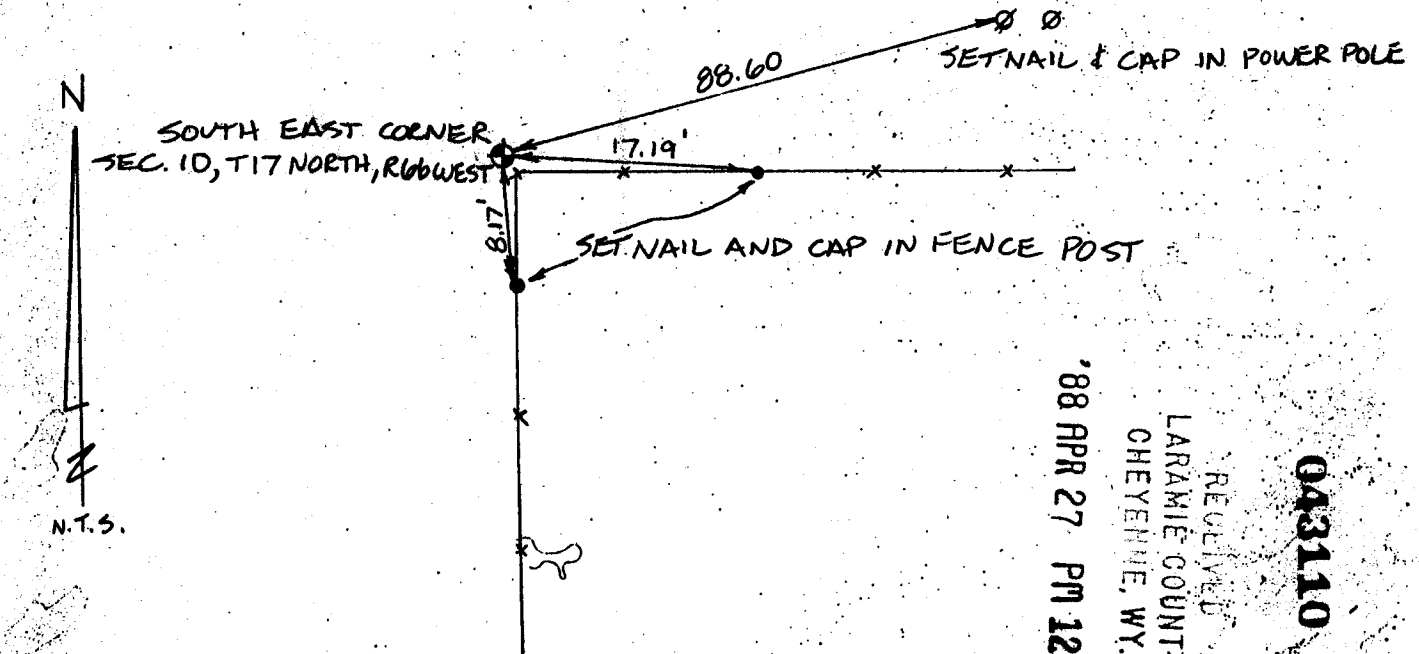
ORIGINAL RECORD CALLS FOR 10" x 10" x 6" LIMESTONE

DESCRIPTION OF MONUMENT AND ACCESSORIES ESTABLISHED TO PERPETUATE THE ORIGINAL LOCATION OF THIS CORNER:

FOUND 1/2" REBAR - SET NAIL & CAP IN FENCE POSTS & POWER POLE AS REFERENCE MONUMENTS

SKETCH, WITH COURSE AND DISTANCE TO ADJACENT CORNER IF DETERMINED IN THIS SURVEY.

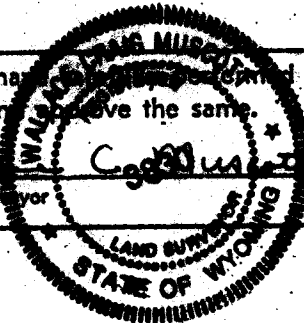
(May Sketch or Paste Reproduction on Reverse Side.)



RECEIVED  
 LARAMIE COUNTY  
 CHEYENNE, WY.  
 '88 APR 27 PM 12 24  
 043110

I, WALLACE C. MUSLOTT certify that I have examined or reviewed the work done on the diagrammed corner as reported on this recordation form and approve the same.

Wallace C. Muslott  
 Signature of Surveyor  
 \*3830  
 Registration No.



STATE OF WYOMING,  
 Office of Clerk and Recorder,  
 County of \_\_\_\_\_

This "corner record" was filed for record on the \_\_\_\_\_ day of \_\_\_\_\_, 19\_\_\_\_, was noted on the cross-index plat and is assigned page No. \_\_\_\_\_, in book No. \_\_\_\_\_

Joseph C. Whitehead  
 County Official  
 Cross Index No. J 17 T. 17 N R. 66 W Mer. 6<sup>th</sup>  
 \_\_\_\_\_ T. \_\_\_\_\_ R. \_\_\_\_\_ Mer. \_\_\_\_\_  
 \_\_\_\_\_ T. \_\_\_\_\_ R. \_\_\_\_\_ Mer. \_\_\_\_\_  
 \_\_\_\_\_ T. \_\_\_\_\_ R. \_\_\_\_\_ Mer. \_\_\_\_\_  
 \_\_\_\_\_ T. \_\_\_\_\_ R. \_\_\_\_\_ Mer. \_\_\_\_\_  
 \_\_\_\_\_ T. \_\_\_\_\_ R. \_\_\_\_\_ Mer. \_\_\_\_\_  
 \_\_\_\_\_ T. \_\_\_\_\_ R. \_\_\_\_\_ Mer. \_\_\_\_\_